

# THE KASP INFRATECH PRIVATE LIMITED

To carry on all the business of infrastructural development of the nation by providing professional engineering services and execution experts.

## COMPANY PROFILE



[www.kaspinfratech.com](http://www.kaspinfratech.com)



# Table of Contents

Who we are	3
Services	5
Our Approach to Project	13
Amalgamation With Client Organisation	14
Project	17
Policies	19
Our Team & Experience	20
Why Choose Us	21



# who we are

## we are KASP

KASP Infratech Private Limited is all in one solution of Infrastructure and Construction services provided by our national network of experts working with clients, communities and colleagues to develop and implement innovative solutions to the most complex challenges Nationwide, we design, build, operate and manage projects and programs that unlock opportunities, protect our environment and improve people's lives.



our work reflects our pride; we make it our number one goal to deliver practical, yet cost-efficient solutions tailored to meet your engineering needs and exceed your project expectations.





# who we are



## OUR VISION

Our vision is to be synonymous with excellence in overall project delivery to breed our multi-disciplinary team in order to offer a comprehensive spectrum of specialist Engineering and Management Consulting services to become our Clients' preferred Professional Service Provider (PSP) choice through excellence and efficiency in all aspects of the project life cycle. Whether it is a highway project, railway project, Irrigation Project implementation of a project management system, or programme management of a multi-faceted initiative, KASP Infratech Pvt. Ltd. is a foremost reputation that will exceed expectations and set new canons

## OUR MISSION

To provide quality services through loyal relationships, clear communication and creative solutions within our unique work environment while achieving personal and community growth.

To be the recognized leader in creating desirable communities, while leaving a legacy of excellence.

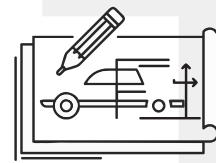


# SOLUTIONS



## Construction & Technical Support

- Road and Bridges
- Hotels and Resorts
- Mall and Shopping Complex
- Group Housing
- STP
- ATMS Structures
- University
- Pre Engineered Buildings



## Design & Drawing

- Pre-Feasibility & Techno-Economic Feasibility Studies
- Survey & Preparation Of Land Acquisition Plan
- Preparation Of Detailed Project Report Works
- Pre-Bid Advisory/Technical Assistance
- Financial Modelling And Analysis
- Traffic & Transport Planning Studies
- Detailed Engineering Design & Project Preparation
- Proof Checking And Review Design
- Urban & Regional Planning And Design
- Project Partnership Liaison
- Construction Supervision
- Project Management
- Environmental Impact Assessment





## PROJECT SUPPORT SERVICES

- Project Office design, implementation and operation
- Project reporting and administration services
- Project guideline/manual development
- Planning and scheduling

## COST ENGINEERING AND CONTROL

- Establish cost baseline
- Cash flow management
- Payment certification
- Change control

## QUANTITY SURVEYING

- Cost estimation
- Re-measurement and certification





# ENGINEERING MANAGEMENT

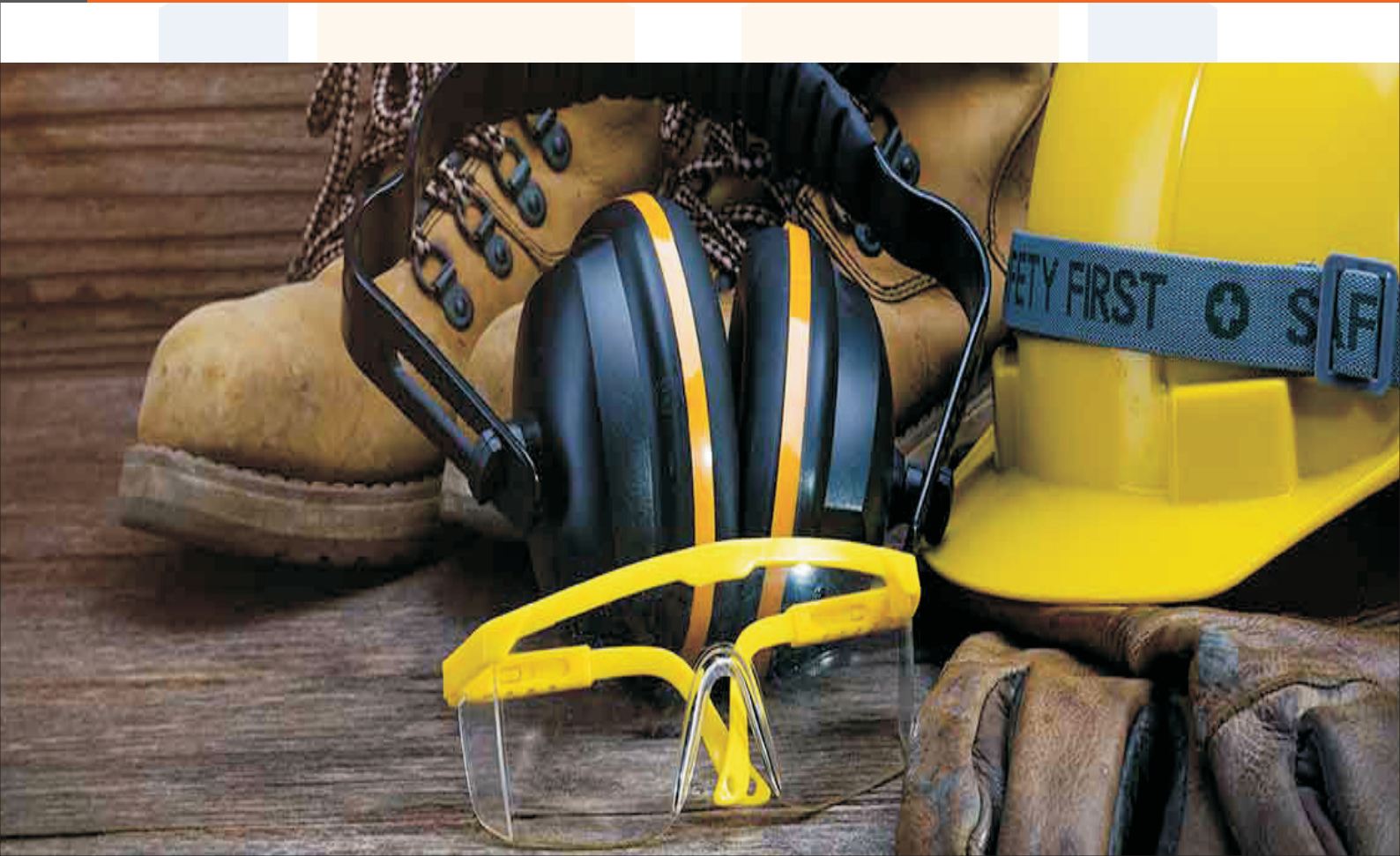
- Engineering discipline coordination and integration:
  - Architectural
  - Civil and structural
  - Mechanical
  - Electrical
  - Instrumentation

# HEALTH, SAFETY AND ENVIRONMENT

- Safety management
- Safety Agent function
- Environmental control and management of project sites

# QUALITY MANAGEMENT

- Establish quality parameters
- Review and approval of Contractor Quality Control Plans
- Inspection and handover management





# PROJECT GOVERNANCE, AUDITS AND REVIEWS

- Establishment of project governance structures, principles and protocols.
- Establish project governance mandate, responsibilities, authorities and work method.
- Project audits covering all knowledge areas of project management.
- Conducting phase stage (gate) reviews.
- Conducting project risk reviews.
- Project plan reviews.
- Facilitate technical, HAZOP & financial reviews.

## PROJECT MANAGEMENT TRAINING

Various training courses are presented through one of South Africa's largest and most respected tertiary institutions, ensuring adherence to SAQA and NQF requirements:

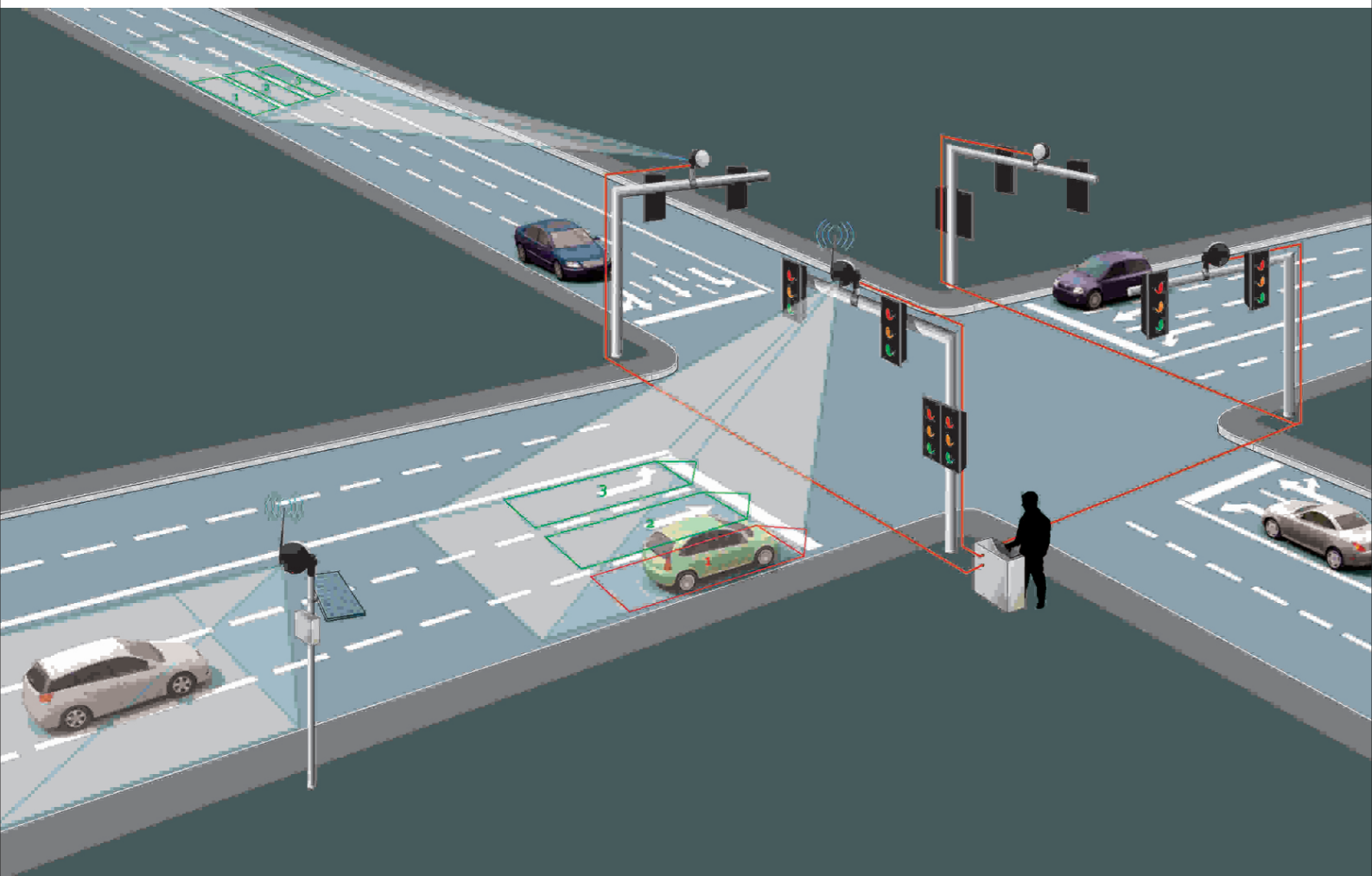
- Project Management Principles & Practices: 3 days.
- Project Management Principles & Practices + MS Project: 5 days.
- Programme in Project Management: 1-year Certificate.
- Advanced Programme in Project Management: 1-year Certificate.
- Custom, client specific, training programmes.





## ADDITIONAL SERVICES (IN ASSOCIATION):

- Pre Engineered Building (PEB)
- Steel Girder Fabrication & Launching
- Reinforced Earth Retaining Wall Construction & Design
- Pre Tension and Post Tensioning Works
- Bridge Load Testing
- Road side Furniture (Sign Board, MBCB & Bus Shelter)
- Providing Design & Constructions Service of Toll Plaza
- Temporary Works (Shuttering & Scaffolding)
- Test on completion & Project Close-out Documentation





# What we do

Being a civil engineering consultancy, KASP Infratech Pvt. Ltd. offers a wide range of Engineering services. These include:

- Structural Design & Construction (Highways, Railways, Buildings, Steel Structures)
- Highways and Railways (Pavement Design, Alignment Design, Traffic Studies)
- Environmental (Water Supply, STP's, Sewer Design)
- Independent Engineer Services
- Proof check of design and drawings from IIT's, NIT's, A.M.U, J.M.I and other govt. institutes.
- Being a civil engineering consultancy, KASP Infratech Pvt. Ltd. offers a wide range of Engineering services.
- Survey and its analysis
- Planning and Designing of Parks and Urban areas.

---

specialises in the  
management, coordination  
and design of all types of  
civil infra work.





**"It's the way we get the right things done"**







### IT IS KASP INFRATECH'S GOAL TO ACHIEVE THE FOLLOWING:

- The correct scope is implemented to address the need and address the project objectives.
- The client pays a fair price for the implemented scope.
- The product is delivered within the best possible time period to optimise "time to market".
- The product meets the user requirement specification and the technical standards set by the professional team.
- A suitable integrated project team focusses on delivery of the product.
- Project risks are continuously identified, assessed and managed.
- The client and stakeholders are suitably informed of progress.
- Documentation is managed and stored.
- Goods and services are procured to meet time, cost and quality requirements.
- The above is integrated towards a successful project

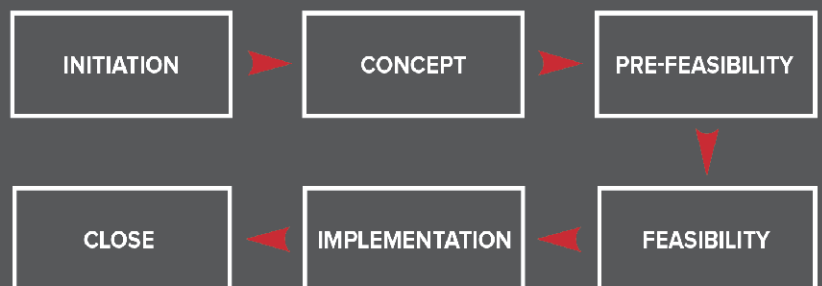




# OUR APPROACH TO PROJECTS

We continuously aim to improve the delivery of projects through the incorporation of lessons learned and the application of robust systems and process.

- Maintain core team of resources.
- Structure project team around project and client needs.
- Supplement resources with selected skilled resources.
- Focus on Project, Engineering and Construction Project Management (supported by sound engineering experience and qualifications).
- Capital, Cost Saving and Business Improvement.



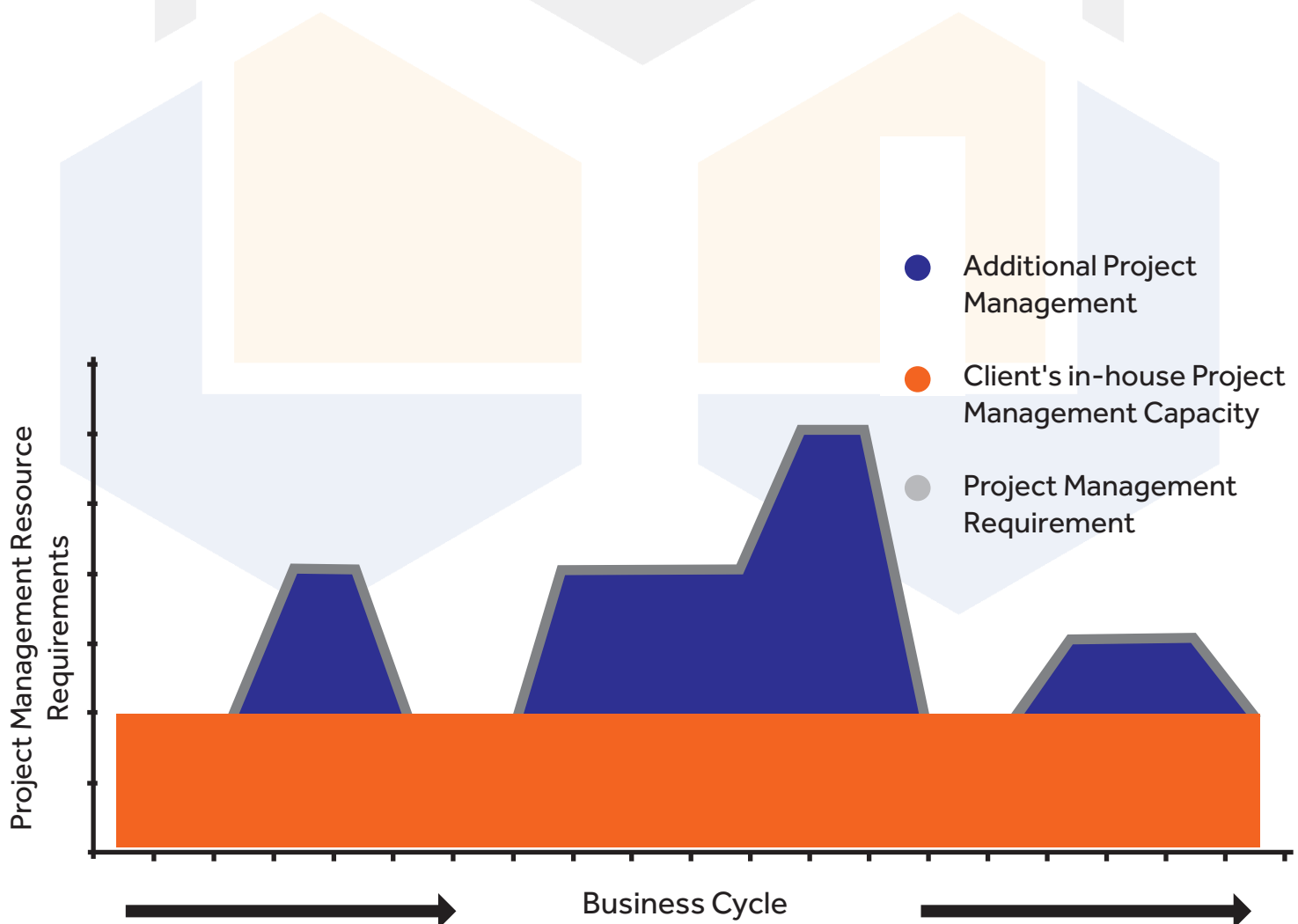
While we maintain focus on the discipline of project management, our strong engineering profile adds significant value, as we assist in planning and interpretation of engineering solutions. We further collaborate with specialist design engineers and construction companies to provide EPC (turnkey) and EPCM (management) solutions to clients.



# AMALGAMATION WITH CLIENT ORGANISATION

Project management requirements vary between organisations and also within the same organisation over time. We have provided a project management service in a number of different circumstances.

A number of “non-projectised” organisations retain some project management capacity inhouse. However, as projects are not core business (production and service delivery usually being the focus), the need for project management varies throughout the business cycle. Projects (usually required to enable and sustain production or for strategic reasons) occur at random and requires short to medium term increase in project management capacity. In organisations such as these, ProjectWay provides project management to “smooth” out the peaks in project management capacity, as depicted in the figure below





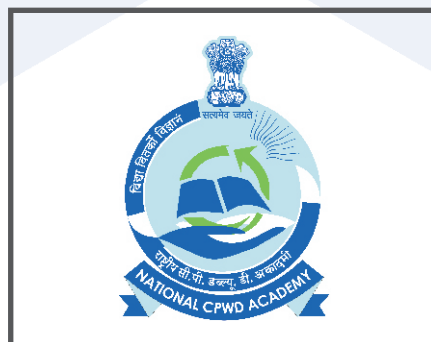
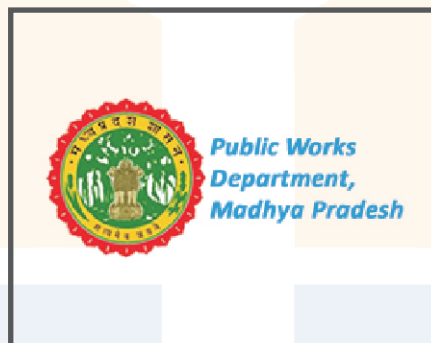
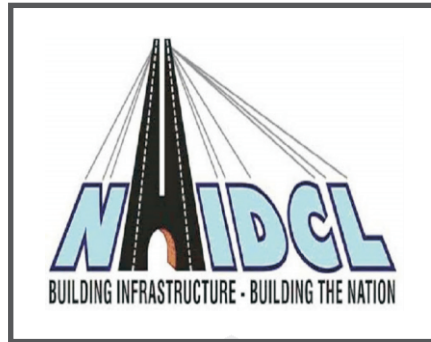


Start-up businesses may require the establishment of infrastructure or systems to enable the business to commence with operations. In such situations we develop feasibility studies and the required project plan to establish the infrastructure and/or systems. This is followed by the implementation of the project plan, which involves engineering, procurement, construction, commissioning and hand-over to operations.

Our project team structure is primarily determined by the client's in-house resources, which may in some cases be made available to the project. We consider an approach of "co-sourcing" to be the modern improvement to outsourcing and insourcing. This is an arrangement where resources and tools are made available to the project by the client.



# OUR CLIENT LIST





# PROJECTS

Our company's project experience extends over a number of project types and industries, of which the most notable are listed below:

PROJECT	INDUSTRY
Consultancy Services for preparation of DPR for development of Economic Corridors, Inter Corridors and Feeder Routes to improve the efficiency of freight movement in India under Bharatmala Pariyojana (Lot-4) of length 250km.	R & B
Consultancy Services for feasibility study and preparation of detailed project report for improvement and up-gradation of In principle declaration of Lakhpat Gaduli Hajipur Khavda Dholavifra Mauvana Santalpur road as new National Highway in the state of Gujarat of length 278 km.	R & B
Consultancy Services for carrying out feasibility study and detailed project preparation for Redesigning, Rehabilitation and Up-gradation to 2-lane/2-lane with paved shoulders or its strengthening in the State of Himachal Pradesh (length is 100km)	R & B
Preparation of Detail Project Report for Natanika Bada Kathumar I/C By Pass Road (SH-44) from 0+000 km at Natani ka Bada to 60+095 km (T- Junction of SH 13 to Kathumar at Cross junction with SH- 22 in the State of Rajasthan under Swiss challenge mode.	R & B
Additional Facilities for 4 lane divided highway of km 52.250 to 130.560 of NH-58 (Meerut – Muzaffarnagar Section) in the state of UP on EPC mode.	R & B
Preparation of DPR of roads of Jammu & Kashmir and Agra under PMGSY schemes.	R & B
Rehabilitation and Up gradation of Harpalpur – Sugira Section (km 89.600 to 133.520) of NH-76 (New NH no. 339) in the state of UP to 2 lane with paved shoulder under EPC mode	R & B



[illegible]



# POLICIES

## QUALITY POLICY

KASP INFRATECH PVT. LTD. will make quality a way of life. Quality is the result of good management and will be achieved by the way we get the right things done.

We believe there is always a better way to provide services to our clients and strive for continuous improvement. In rendering our services we will optimise resource utilisation and commit ourselves fully to the task at hand. We consider meeting client requirements as the minimum performance criteria and aim to surpass expectations.

## SAFETY, HEALTH AND ENVIRONMENTAL POLICY

KASP INFRATECH PVT. LTD. is committed to a clean, safe and healthy environment for our employees, contractors, customers and the communities around us.

All employees and contractors forming part of the KASP INFRATECH PVT. LTD. service, have a duty to prevent harm to themselves, to others and to the environment.

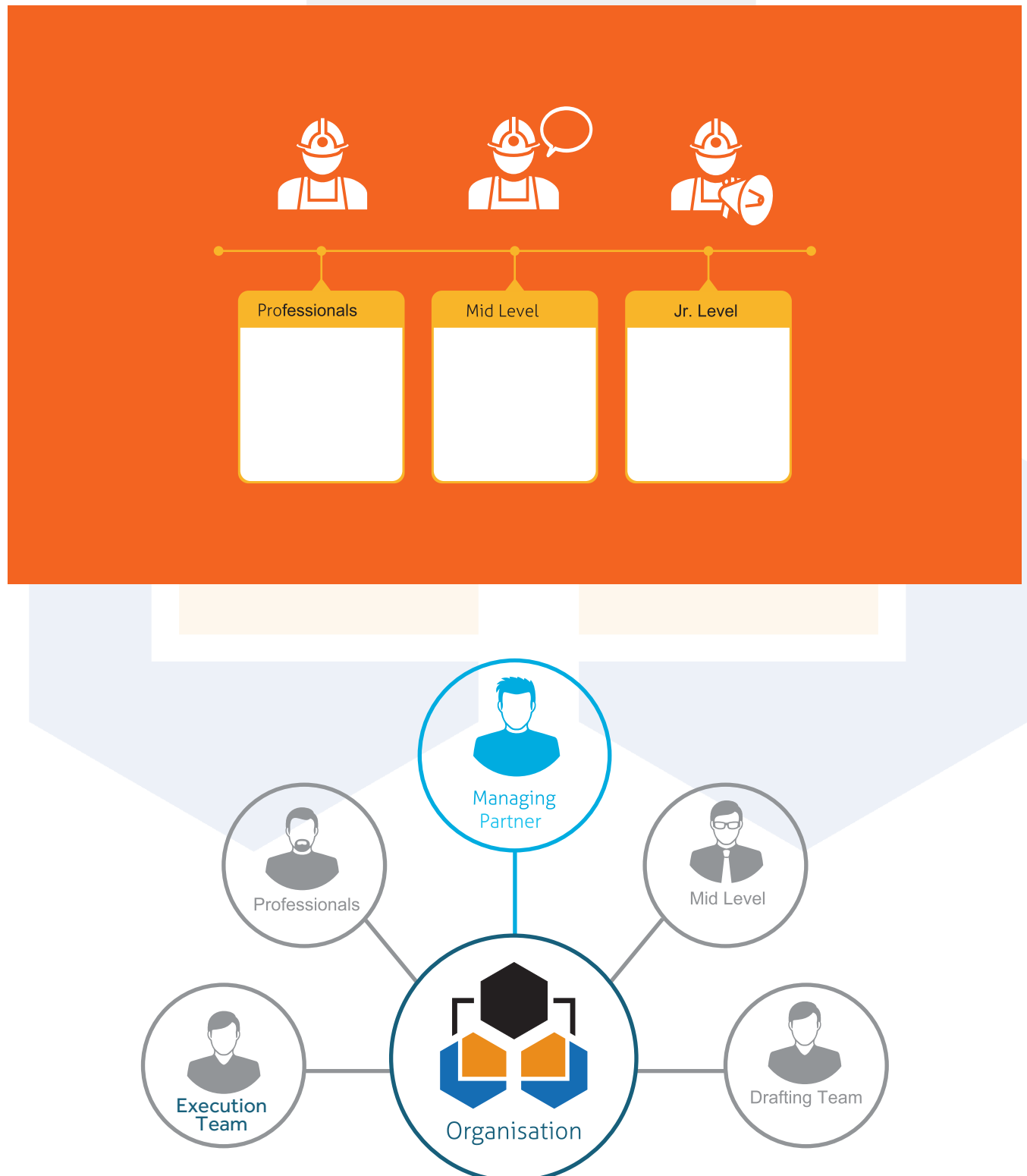
KASP INFRATECH PVT. LTD. will comply with all the applicable legislation, regulations and customers' requirements as minimum benchmark for its Safety, Health and Environment Policy. KASP INFRATECH PVT. LTD. will regularly review this policy, practices and performance to ensure ongoing improvements





# OUR TEAM

Our team is flexible and able to adjust to clients' specific needs with respect to geography, internal processes and systems, as well as the availability of resources. The core team of project managers consists of graduate civil, mechanical and industrial engineers, with inhouse Cost Management, Quality Control and Administration Support complementing our service delivery.





# WHY CHOOSE US

## We're Committed to Excellence

If you get three quotes for your project, we're probably not going to be the cheapest option. But as the saying goes, you get what you pay for. Our clients choose us because they know we'll always do what's right from beginning to end. Every choice or recommendation we make has your goals in mind – we want you to be absolutely thrilled with your experience with us.



**Project Planning : 100%**

---

**Project Progress : 100%**

---

**Project Completed : 100%**

---



# CONTACT US

## OUR OFFICE



### CORPORATE OFFICE:

CB -209 2nd Floor,  
Near Indian Oil Petrol Pump,  
Ring road Block -CB, Naraina,  
New Delhi, India, 110028



**+91 93406 15296**



**info@kaspinfratech.com**



**www.kaspinfratech.com**

**GSTIN : 07AAJCK6245M1Z1**

**CIN : U45309DL2022PTC400783**

